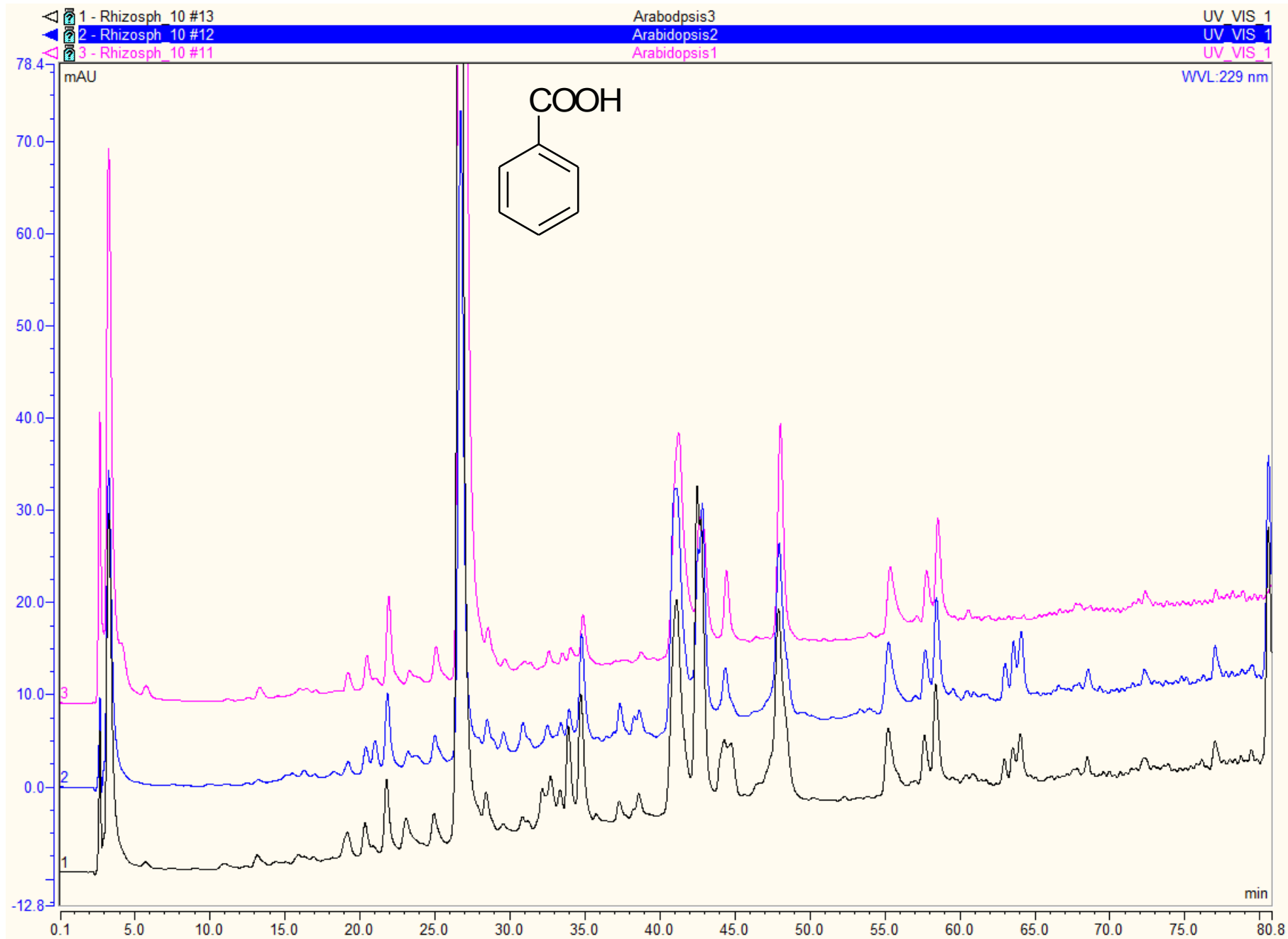
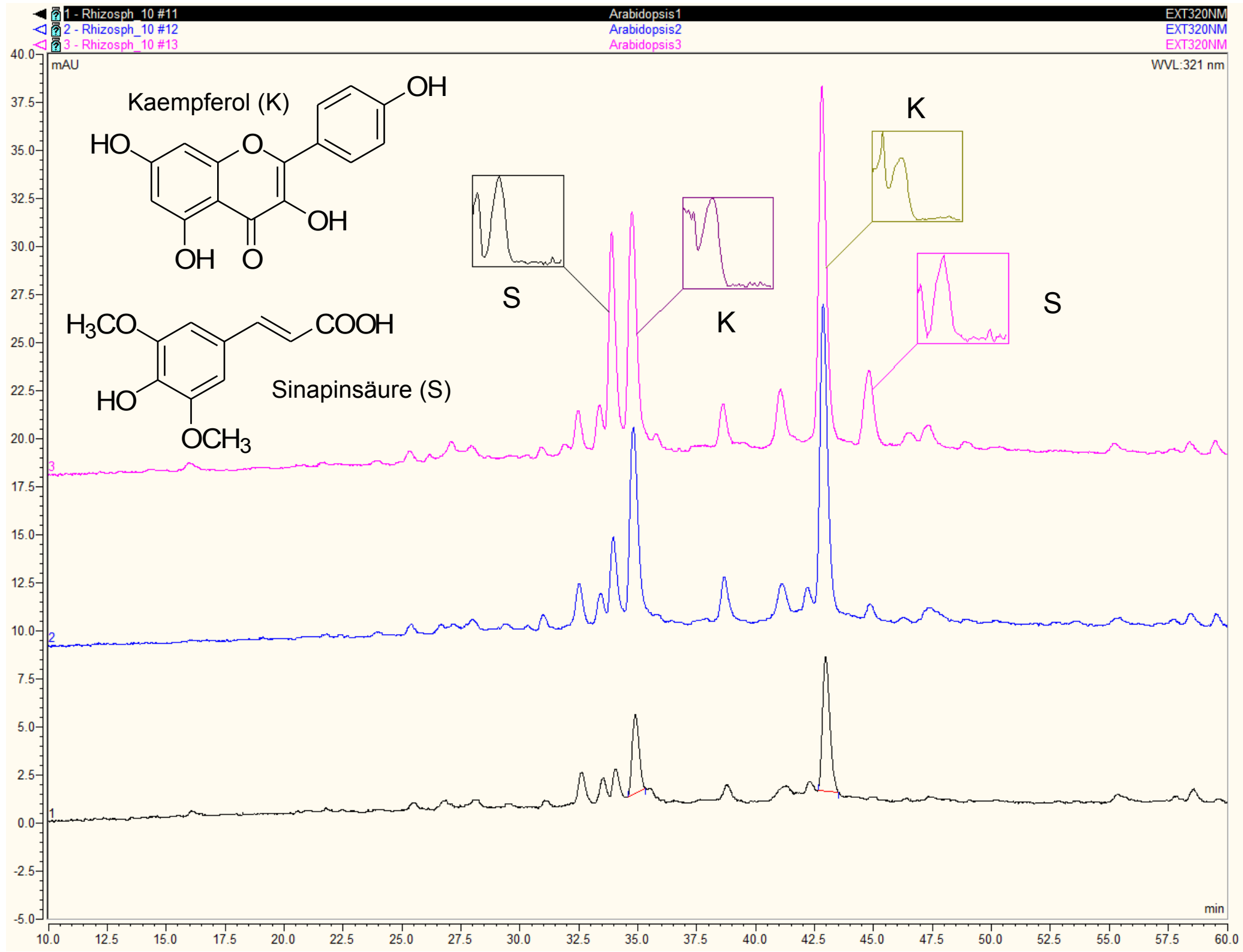


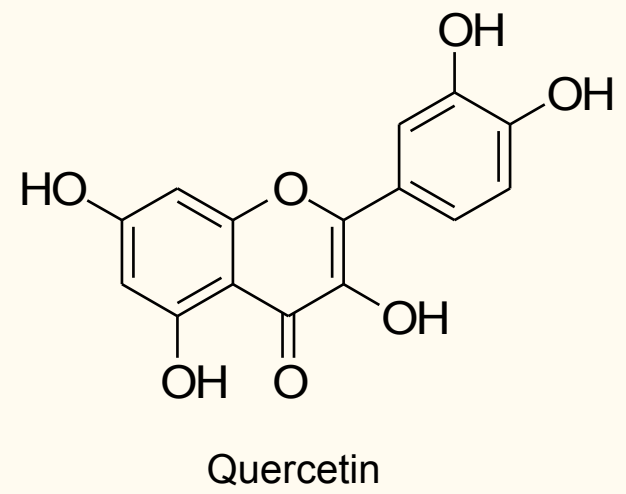
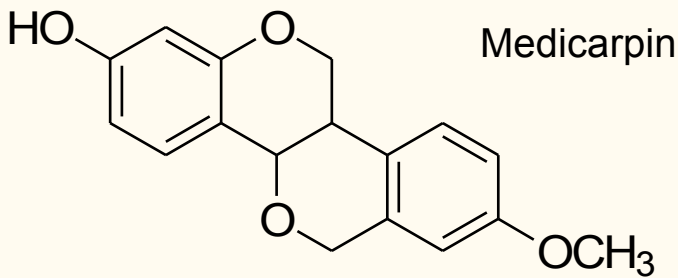
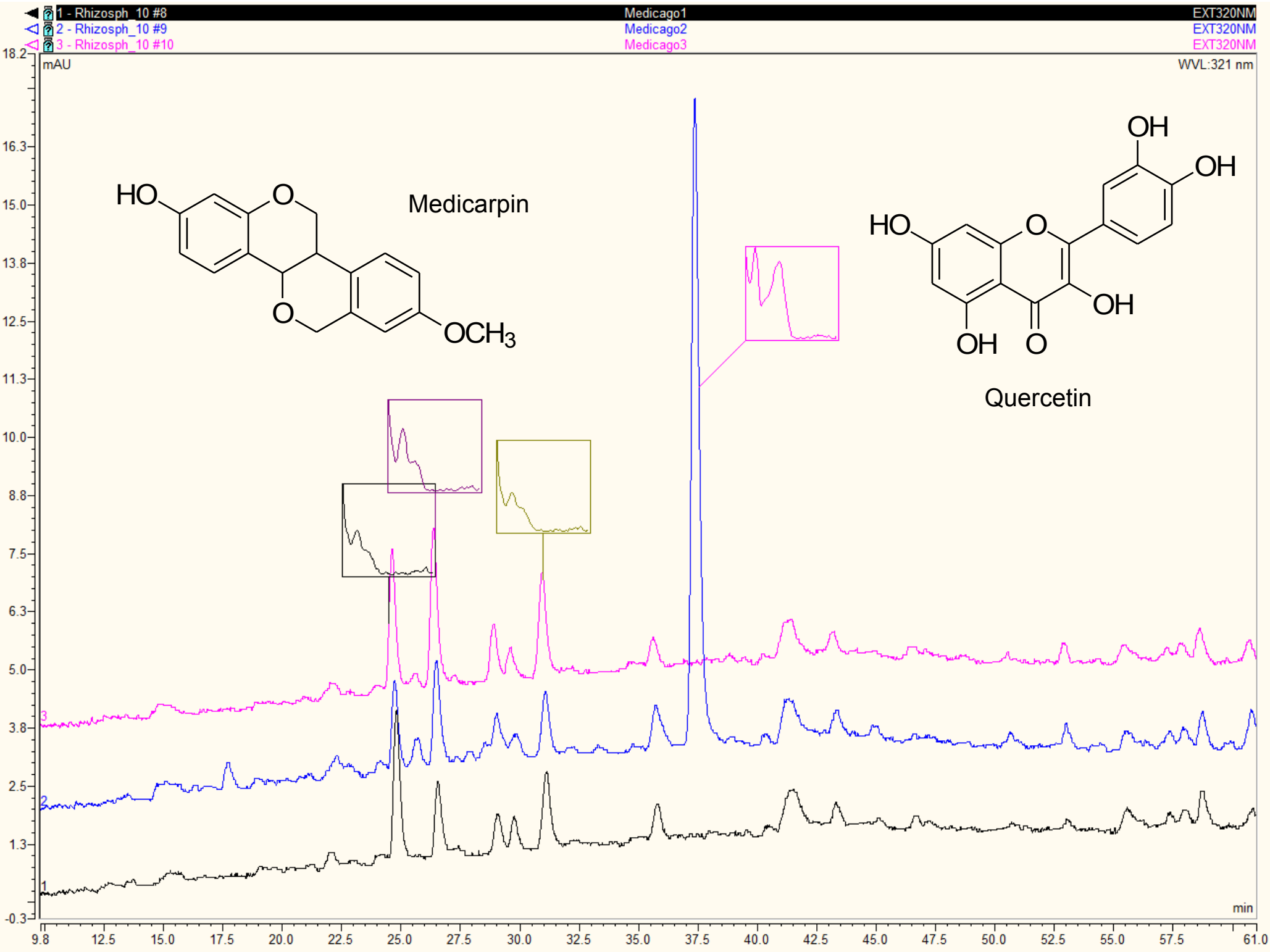
# Arabidopsis (*Arabidopsis thaliana*)



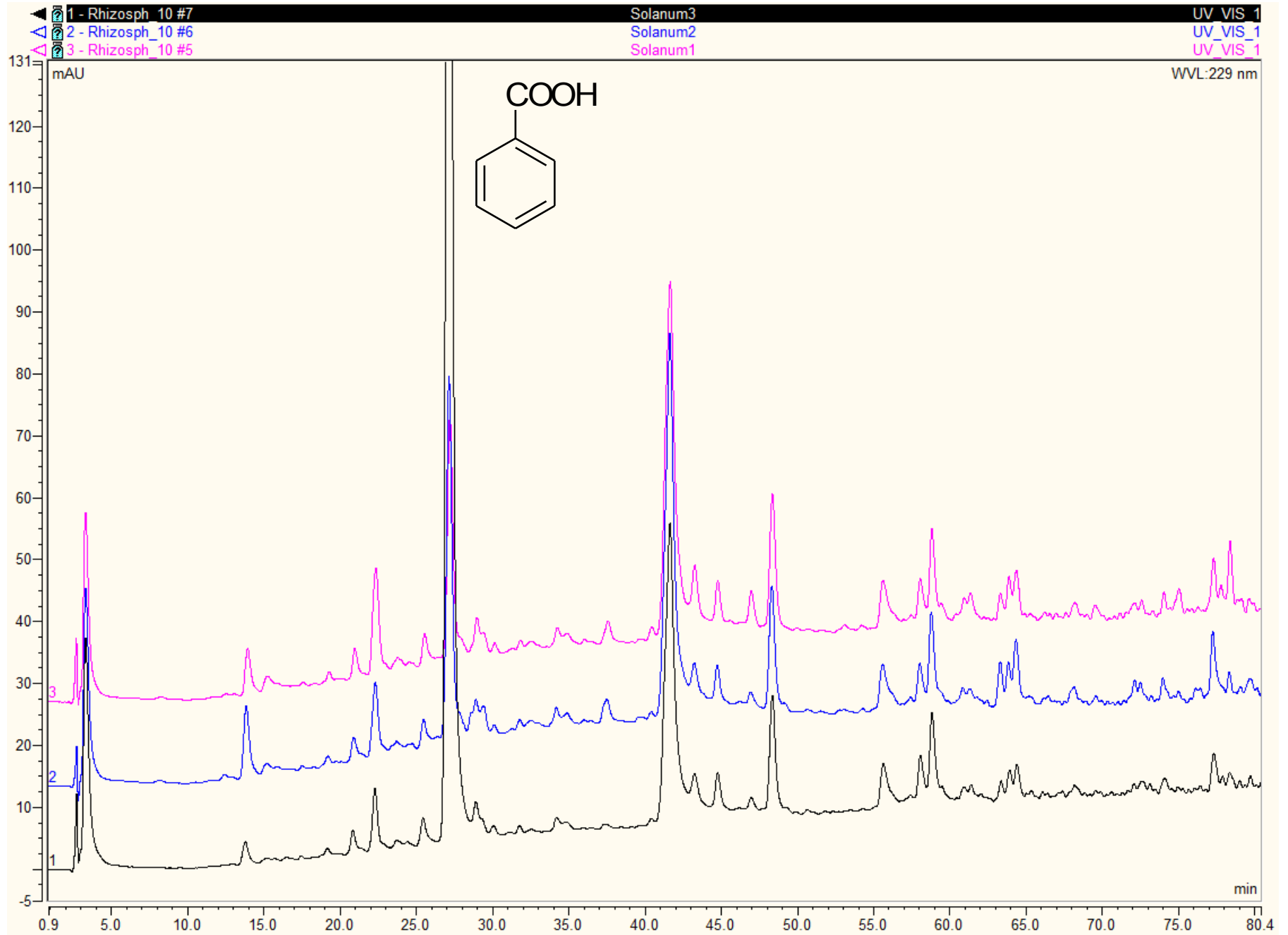


# Medicago (*Medicago truncatula*)





# Tomate (*Solanum lycopersicum*)

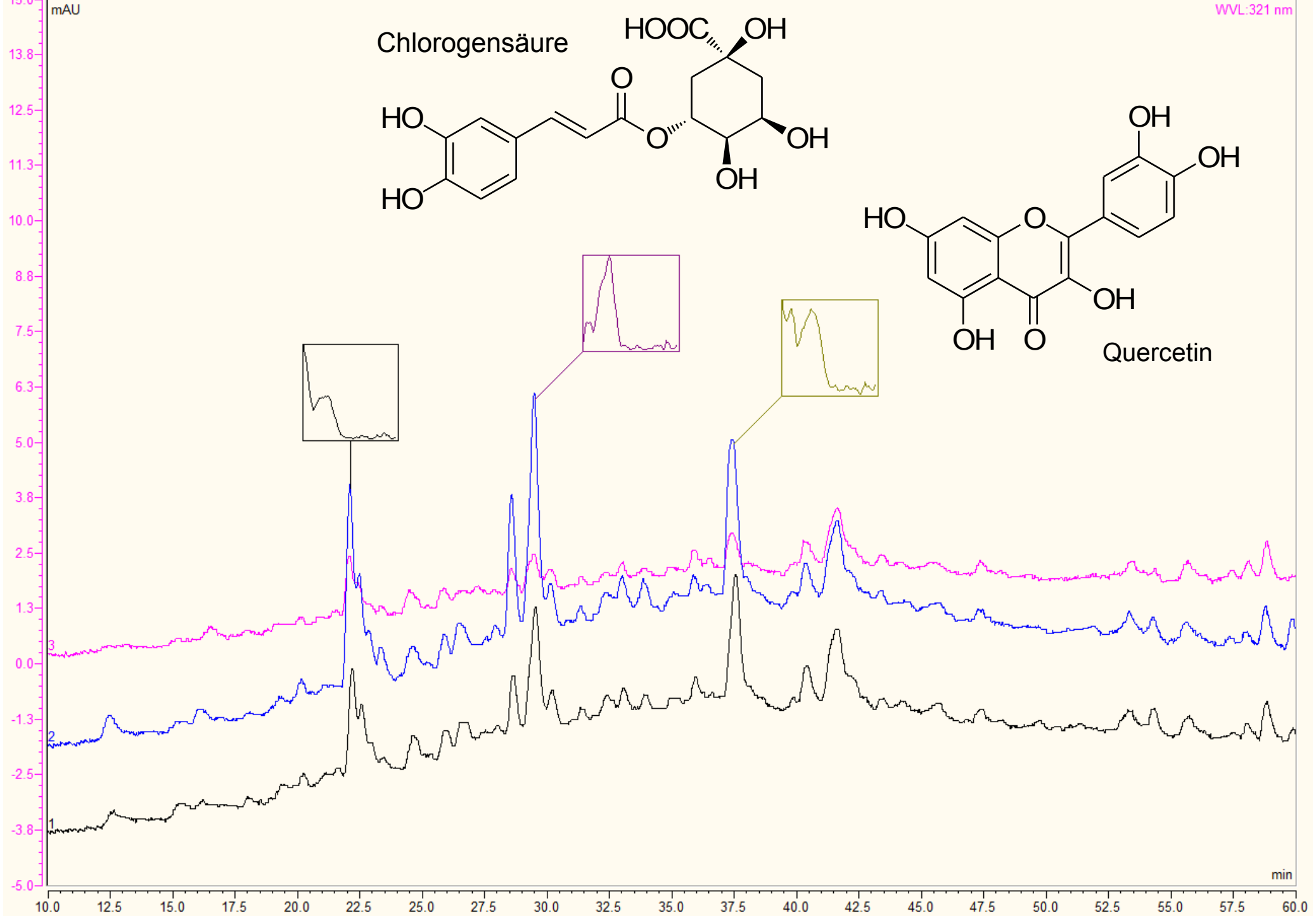


1 - Rhizosph\_10 #5  
2 - Rhizosph\_10 #6  
3 - Rhizosph\_10 #7

Solanum1  
Solanum2  
Solanum3

EXT320NM  
EXT320NM  
EXT320NM

WVL:321 nm



# Zuckerrohr (*Saccharum officinarum*)

